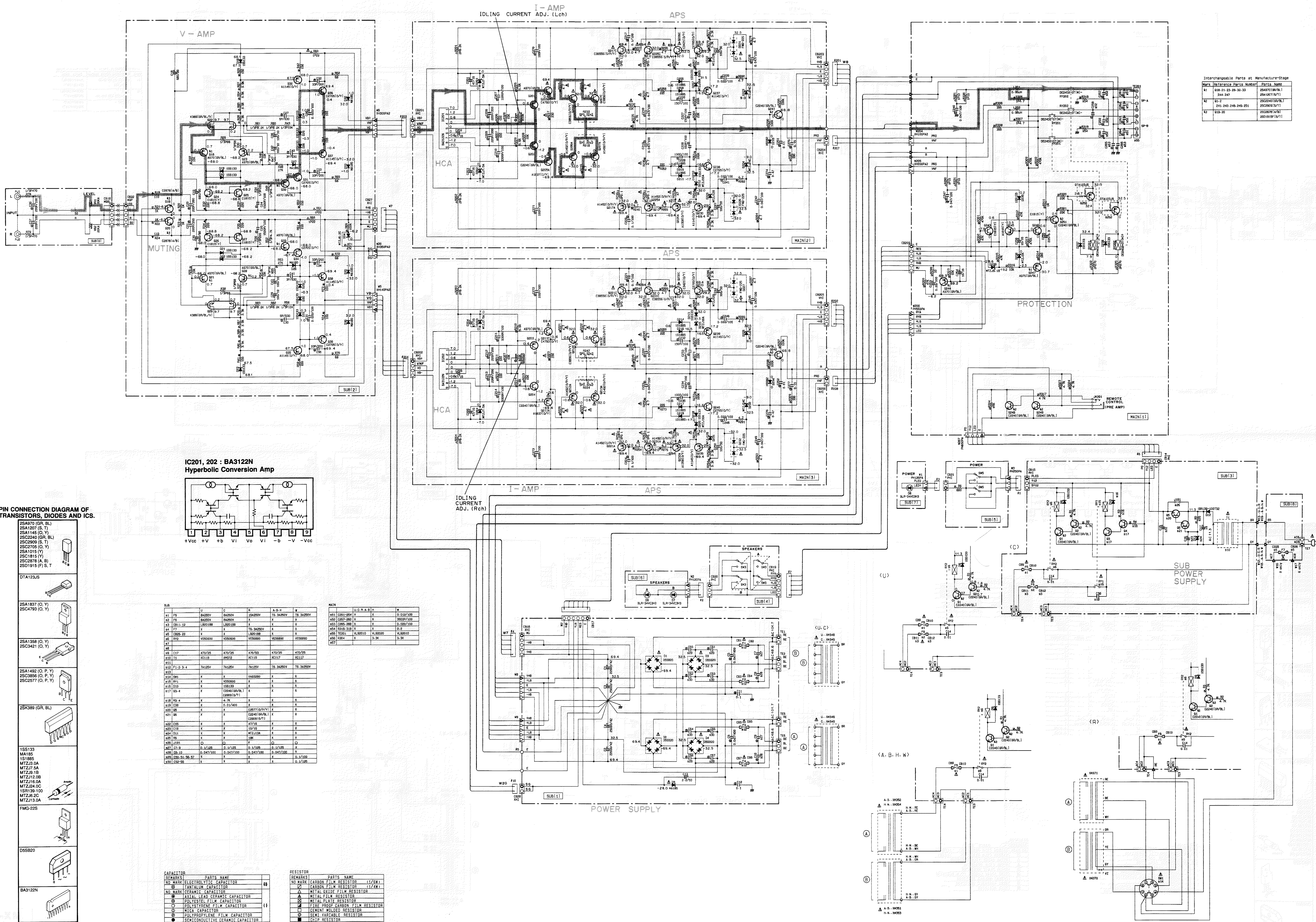


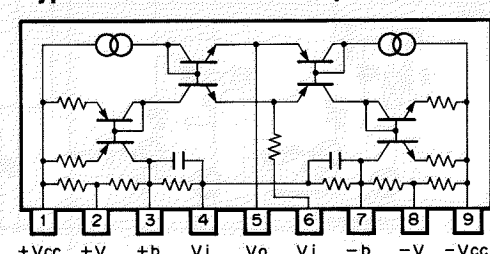
MX-2 SCHEMATIC DIAGRAM



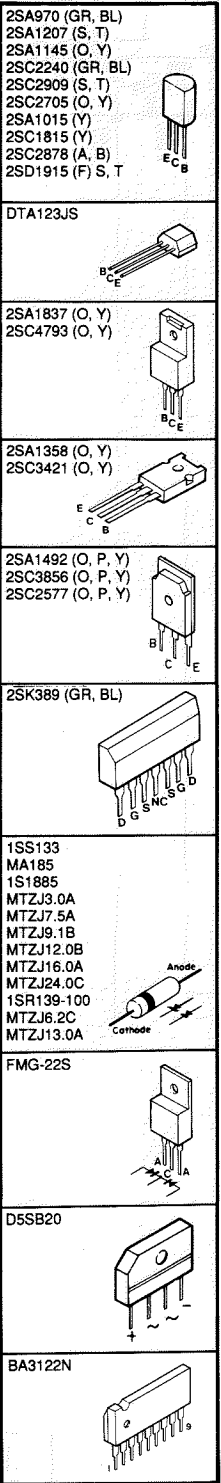
Interchangeable Parts at Manufacturer's Disposal

Part No.	Part Name	Part No.	Part Name
A1	25A1207 (S, T)	25A1207 (S, T)	25A1207 (S, T)
A2	25A1145 (O, Y)	25C2240 (GR, BL)	25C2240 (GR, BL)
A3	25C2240 (GR, BL)	25C2240 (GR, BL)	25C2240 (GR, BL)
A4	25C2240 (GR, BL)	25C2240 (GR, BL)	25C2240 (GR, BL)
A5	25C2240 (GR, BL)	25C2240 (GR, BL)	25C2240 (GR, BL)
A6	25C2240 (GR, BL)	25C2240 (GR, BL)	25C2240 (GR, BL)
A7	25C2240 (GR, BL)	25C2240 (GR, BL)	25C2240 (GR, BL)
A8	25C2240 (GR, BL)	25C2240 (GR, BL)	25C2240 (GR, BL)
A9	25C2240 (GR, BL)	25C2240 (GR, BL)	25C2240 (GR, BL)
A10	25C2240 (GR, BL)	25C2240 (GR, BL)	25C2240 (GR, BL)

IC201, 202 : BA3122N Hyperbolic Conversion Amp



PIN CONNECTION DIAGRAM OF TRANSISTORS, DIODES AND ICs.



SUB	U	C	A	A-B-H	M
A1	FR	BA209V	BA209V	TL-3429V	TL-3429V
A2	FR	BA209V	BA209V	TL-3429V	TL-3429V
A3	CR11-12	180138P	180138P	L	L
A4	FR	X	TL-3429V	X	X
A5	CR25-23	X	180138P	L	L
A6	FR	V90630	V90630	VE5680	VE5680
A7	FR	X	X	X	X
A8	CR7	470295	470295	470295	470295
A9	CR12	2213	2213	2213	2213
A10	FR	7A126V	7A126V	7A126V	7A126V
A11	FR	X	X	X	X
A12	FR	X	V90630	V90630	V90630
A13	FR	X	180138P	L	L
A14	FR	X	CR24018V/L	L	L
A15	FR	X	CR24018V/L	L	L
A16	FR	X	4.7K	X	X
A17	FR	X	0.01/400	X	X
A18	FR	X	X	X	X
A19	FR	X	CR27110V/L	L	L
A20	FR	X	CR24018V/L	L	L
A21	FR	X	CR24018V/L	L	L
A22	FR	X	470K	X	X
A23	FR	X	10/15	X	X
A24	FR	X	MT212A	X	X
A25	FR	X	10K	X	X
A26	FR	X	10K	X	X
A27	FR	X	0.01/100	0.01/100	0.01/100
A28	FR	X	0.047/100	0.047/100	0.047/100
A29	FR	X	X	X	X
A30	FR	X	0.01/100	0.01/100	0.01/100

MIN	U.S.A.S	M	M
A31	CR1-264	X	0.01/100
A32	CR1-264	X	0.01/100
A33	CR2-268	X	0.01/100
A34	FR	X	X
A35	FR	V-52010	V-52010
A36	FR	X	3.3K
A37	FR	X	3.3K

REMARKS	PARTS NAME	REMARKS	PARTS NAME
NO MARK	ELECTROLYTIC CAPACITOR	NO MARK	CARBON FILM RESISTOR (1/4W)
NO MARK	TANTALUM CAPACITOR	NO MARK	CARBON FILM RESISTOR (1/4W)
NO MARK	CERAMIC CAPACITOR	NO MARK	METAL GLAZE FILM RESISTOR
NO MARK	ASTAL LEAD CERAMIC CAPACITOR	NO MARK	METAL FILM RESISTOR
NO MARK	POLYESTER FILM CAPACITOR	NO MARK	METAL PLATE RESISTOR
NO MARK	POLYPROPYLENE FILM CAPACITOR	NO MARK	FIRE-PROOF CARBON FILM RESISTOR
NO MARK	MICA CAPACITOR	NO MARK	CEMENT MOUNTED RESISTOR
NO MARK	SEMICONDUCTIVE CERAMIC CAPACITOR	NO MARK	SLIM VARIABLE RESISTOR
		NO MARK	IC/CP RESISTOR

All voltage are measured with a 10MΩ/V DC electric volt meter.
 Components having special characteristics are marked Δ and must be replaced with parts having specifications equal to those originally installed.
 Schematic diagram is subject to change without notice.